



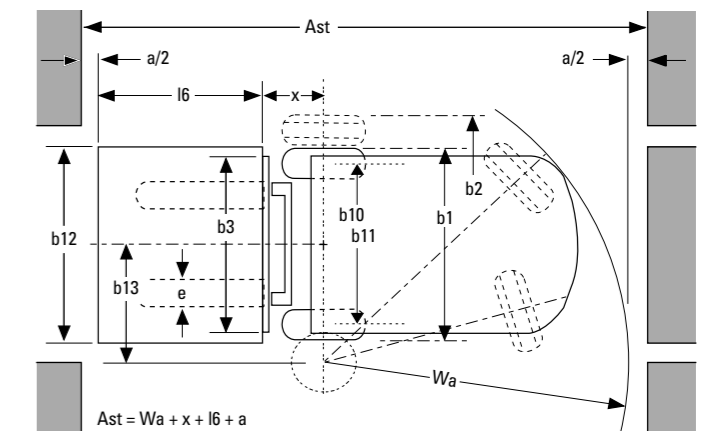
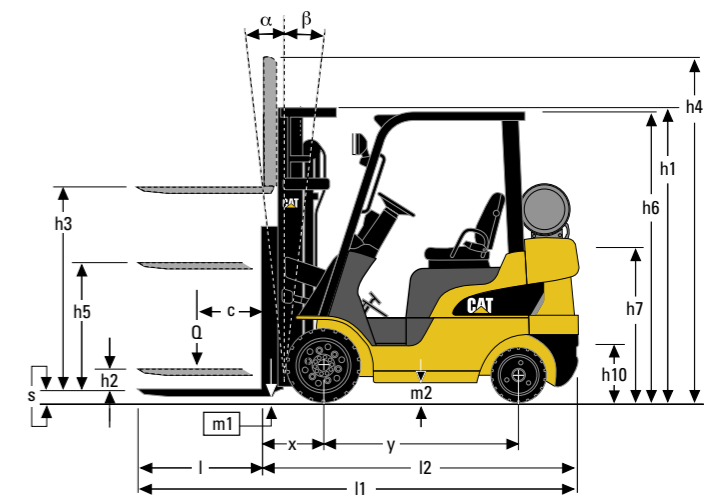
# **GC20N - GC25N - GC28N - GC30N - GC33N**

Specifications

**Engine powered lift trucks**

2.0 - 3.0 tonnes

Characteristics			Cat Lift Trucks	Cat Lift Trucks	Cat Lift Trucks		Cat Lift Trucks	Cat Lift Trucks
1.01	Manufacturer (abbreviation)		GC20N	GC25N	GC28N		GC30N	GC33N
1.02	Manufacturer's model designation		LPG	LPG	LPG		LPG	LPG
1.03	Power source: (battery, diesel, LP gas, petrol)		Seated	Seated	Seated		Seated	Seated
1.04	Operator type: pedestrian, (operator)-standing, -seated		2000	2500	2750		3000	2950
1.05	Load capacity	Q (kg)	500	500	500		500	600
1.06	At load centre	c (mm)	415	420	435		435	435
1.08	Load distance	x (mm)	1400	1400	1400		1400	1400
1.09	Wheelbase	y (mm)						
<b>Weight</b>								
2.01	Truck weight, without load / including battery (simplex mast, lowest lift height)	kg	3338	3700	4104		4300	4508
2.02	Axle loading with maximum load, front/rear (simplex mast, lowest lift height)	kg	4525/-	5211/-	5739/-		6038/-	6454/-
2.03	Axle loading without load, front/rear (simplex mast, lowest lift height)	kg	1384 / 1954	1285 / 2415	1381 / 2723		1314 / 2986	1304 / 3204
<b>Wheels, Drive Train</b>								
3.01	Tyre type: V=solid, L=pneumatic, SE=solid pneumatic - front/rear		V / V	V / V	V / V		V / V	V / V
3.02	Tyre dimensions, front		21 x 7 x 15	21 x 7 x 15	21 x 8 x 15		21 x 8 x 15	21 x 8 x 15
3.03	Tyre dimensions, rear		16 x 6 x 10-1/2	16 x 6 x 10-1/2	16 x 6 x 10-1/2		16 x 6 x 10-1/2	16 x 6 x 10-1/2
3.05	Number of wheels, front/rear (x=driven)		2x / 2	2x / 2	2x / 2		2x / 2	2x / 2
3.06	Track width (centre of tyres), front	b10 (mm)	886	886	912		912	912
3.07	Track width (centre of tyres), rear	b11 (mm)	890	890	890		890	890
<b>Dimensions</b>								
4.01	Mast tilt, forwards/backwards	$\alpha/\beta$ °	5 / 9	5 / 9	5 / 6		5 / 6	5 / 6
4.02	Height with mast lowered (see tables)	h1 (mm)	2110	2110	2110		2110	2230
4.03	Free lift (see tables)	h2 (mm)	80	80	90		90	90
4.04	Lift height (see tables)	h3 (mm)	3295	3295	3265		3265	3265
4.05	Overall height with mast raised	h4 (mm)	4570	4570	4540		4540	4570
4.07	Height to top of overhead guard	h6 (mm)	2080	2080	2080		2080	2080
4.08	Seat height	h7 (mm)	1090	1090	1090		1090	1090
4.12	Tow coupling height	h10 (mm)	-	-	-		-	-
4.19	Overall length	l1 (mm)	3320	3385	3440		3475	3500
4.20	Length to fork face (includes fork thickness)	l2 (mm)	2295	2360	2415		2450	2475
4.21	Overall width	b1/b2 (mm)	1065 / 1130	1065 / 1130	1115 / 1155		1115 / 1155	1115 / 1155
4.22	Fork dimensions (thickness, width, length)	s / e / l (mm)	45 / 100 / 1070	45 / 100 / 1070	45 / 125 / 1070		45 / 125 / 1070	45 / 125 / 1070
4.23	Fork carriage to DIN 15 173 A/B/no		2A	2A	3A		3A	3A
4.24	Fork carriage width	b3 (mm)	920	920	960		960	960
4.31	Ground clearance under mast, with load	m1 (mm)	80	80	80		80	80
4.32	Ground clearance at centre of wheelbase, with load (forks lowered)	m2 (mm)	139	139	139		139	139
4.33	Working aisle width with 1000 x1200 mm pallets, crosswise	Ast (mm)	3580	3640	3700		3730	3760
4.34	Working aisle width with 800 x1200 mm pallets, crosswise	Ast (mm)	3380	3440	3500		3530	3560
4.35	Turning circle radius	Wa (mm)	1965	2020	2065		2095	2125
4.36	Minimum distance between centres of rotation	b13 (mm)	-	-	-		-	-
<b>Performance</b>								
5.01	Travel speed, with/without load	km/h	17.5 / 18	17.5 / 18	16.5 / 17		16.5 / 17	16.5 / 17
5.02	Lifting speed, with/without load	m/s	0.58 / 0.59	0.64 / 0.65	0.53 / 0.54		0.53 / 0.54	0.53 / 0.54
5.03	Lowering speed, with/without load	m/s	0.50 / 0.50	0.50 / 0.50	0.50 / 0.50		0.50 / 0.50	0.50 / 0.50
5.05	Rated drawbar pull, with/without load	N	16700/-	19200/-	20100/-		20000/-	19900/-
5.07	Gradeability, with/without load	%	35/-	34.8/-	32.7/-		30.4/-	28.3/-
5.09	Acceleration time (10 metres) with/without load	s	-	-	-		-	-
5.10	Service brakes (mechanical/hydraulic/electric/pneumatic)		Hydraulic	Hydraulic	Hydraulic		Hydraulic	Hydraulic
<b>Engine motors</b>								
7.01	Manufacturer / Type		K25	K25	K25		K25	K25
7.02	Rated output B to ISO 1585	kW	47	47	47		47	47
7.03	Rated speed to DIN 70 020	rpm	2700	2700	2700		2700	2700
7.04	Number of cylinders / cubic capacity	cm3	4 / 2500	4 / 2500	4 / 2500		4 / 2500	4 / 2500
7.05	Fuel consumption according to VDI cycle	l/h / kg/h	-	-	-		-	-
<b>Miscellaneous</b>								
8.01	Type of drive control		Powershift 1/1	Powershift 1/1	Powershift 1/1		Powershift 1/1	Powershift 1/1
8.02	Maximum operating pressure for attachments	bar	158	158	158		158	158
8.03	Oil flow for attachments	l/min	89.1	89.1	89.1		89.1	89.1
8.04	Noise level, mean value at operator's ear	dB(A)	-	-	-		-	-
8.05	Towing coupling design / DIN type, ref.		-	-	-		-	-



Ast = Working aisle width with load  
a = Safety clearance (200 mm)

l6 = Pallet length (800 or 1000 mm)  
b12 = Pallet width (1200 mm)



### Lower Cost of Ownership

- Design improvements have extended the service interval to 500 hours, thus reducing the total cost of ownership.
- Vehicle Control Unit controls various safety functions and allows easy troubleshooting of all electronic components.

### Unmatched Productivity

- State-of-the-art LPG engine with engine management system, on-the-fly timing adjustment, and regulated catalytic converter for improved performance, lower noise levels and lower emission.
- Special powertrain layout to lower the centre of gravity, increasing truck stability and residual lifting capacities, resulting in higher efficiency.
- Several components are designed to prevent down-time: active engine protection system prevents damage caused by overheating; solid-state distributor-less ignition system (longer life time); square-wave fin radiator has perfect cooling capacity while reducing clogging; the single-piece cast drive axle housing is leak-free and durable.

### Safety and Ergonomics

- Safety seat switch prevents truck operation when the operator is not seated; the hydraulic lift and tilt functions are disabled, the transmission is disengaged and the parking brake alarm sounds.
- Low noise levels which increase operator comfort.
- Low vibrations: rubber mounted engine, transmission, exhaust, steer axle, hydraulic controls and mast cylinders.
- Quality seat.
- Automotive style pedal layout.
- Adjustable steering column with memory position for comfortable operations.
- Good visibility: low-profile counterweight design gives good visibility when driving reverse; narrow mast channels and improved positioning of hoses and chains give good visibility on the load.

### Options

- Additional working lights and revolving lamps.
- Elevated exhaust.
- Dual front wheels.
- Integral side shifter.

# Cat<sup>®</sup> Lift Trucks.

## Your partner in materials handling.

GC20N/GC25N					GC20N	GC25N
Mast Type	h3	h1	h4	h2/h5	Q @ c=500mm kg	Q @ c=500mm kg
	mm	mm	mm	mm		
Simplex	2000	1460	3260	80	2000	2500
	2760	1840	4020	80	2000	2500
	3000	1960	4260	80	2000	2500
	3290	2105	4550	80	2000	2500
	3720	2365	4980	80	2000	2500
4090	2550	5350	80	2000	2500	
Duplex	2820	1870	4090	605	2000	2500
	3000	1960	4270	690	2000	2500
	3300	2110	4570	845	2000	2500
Triplex	4030	1870	5300	605	2000	2500
	4300	1960	5570	695	2000	2500
	4750	2110	6020	845	1950	2450
	5060	2230	6330	965	1900	2400
	5500	2375	6770	1105	1800	1850
5990	2555	7260	1290	1050	1050	

### Mast Performance and Capacity

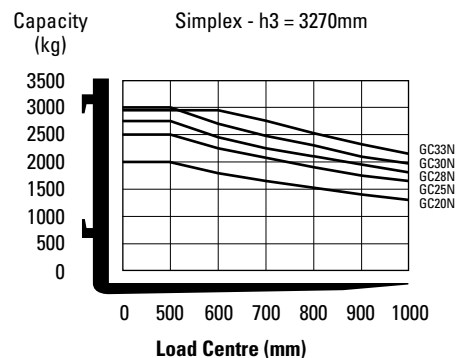
- h1 Height with mast lowered
- h2 Standard free lift
- h3 Standard lift height
- h4 Height with mast raised
- h5 Full free lift
- Q Lifting capacity, rated load
- c Load centre (distance)

The capacities are applicable for cushion tyres (V).

All dimensions include load backrest. In case load backrest is not used h5 will increase by 640 mm (GC20N, GC25N, GC33N), 610 mm (GC28N, GC30N), while h4 will decrease by 640 mm (GC20N, GC25N), 610 mm (GC28N, GC30N, GC33N).

GC28N/GC30N/GC33N					GC28N	GC30N	GC33N
Mast Type	h3	h1	h4	h2/h5	Q @ c=500mm kg	Q @ c=500mm kg	Q @ c=600mm kg
	mm	mm	mm	mm			
Simplex	3030	1990	4300	90	2750	3000	2950
	3270	2110	4540	90	2750	3000	2950
	3700	2375	4970	90	2750	3000	2950
	4000	2555	5270	90	2750	3000	2950
Duplex	2770	1870	4040	600	2750	3000	2950
	3000	1990	4270	720	2750	3000	2950
	3250	2110	4520	840	2750	3000	2950
Triplex	4320	1990	5590	720	2750	3000	2950
	4700	2110	5970	840	2750	2950	2950
	5060	2230	6330	960	2600	2900	2850
	5450	2375	6720	1105	1850	1850	1400

### Capacities at various load centres



catliftruck@mcf.nl  
www.catliftruck.com

CESC0849(01/08)ok  
Copyright ©2007, MCFE. All rights reserved.  
CAT, CATERPILLAR, their respective logos and 'Caterpillar Yellow', as well as corporate and product identity used herein, are trademarks of Caterpillar and may not be used without permission.  
Printed in The Netherlands

NOTE: Performance specifications may vary depending on standard manufacturing tolerances, vehicle condition, types of tyres, floor or surface conditions, applications, or operating environment. Trucks may be shown with non-standard options. Specific performance requirements and locally available configurations should be discussed with your Cat lift trucks Dealer. Cat Lift Trucks follows a policy of continual product improvement. For this reason, some materials, options and specifications could change without notice.

**CAT** Lift Trucks