

NSV12N
NSV12NI
NSV12NS
NSV16N
NSV16NI
NSV16NS

Specifications

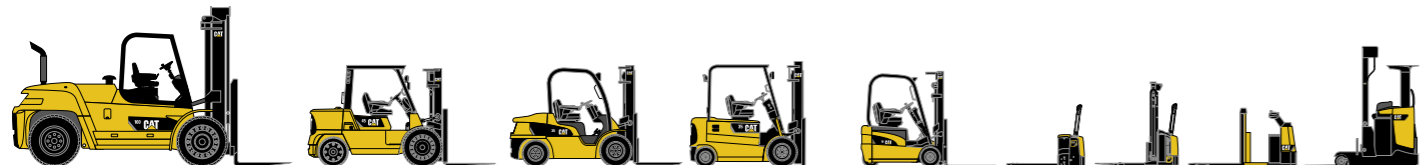
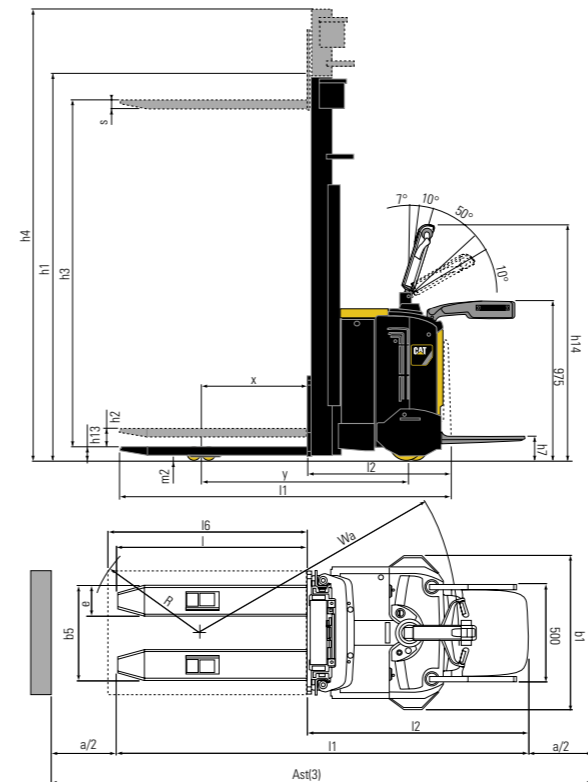
**Platform
stacker trucks**
1.2 - 1.6 tonnes



Characteristics			Cat Lift Trucks	Cat Lift Trucks	Cat Lift Trucks	Cat Lift Trucks	Cat Lift Trucks	Cat Lift Trucks
			NSV12N	NSV12NI	NSV12NS	NSV16N	NSV16NI	NSV16NS
			Battery	Battery	Battery	Battery	Battery	Battery
			Pedestrian/stand-on	Pedestrian/stand-on	Pedestrian/stand-on	Pedestrian/stand-on	Pedestrian/stand-on	Pedestrian/stand-on
1.01	Manufacturer (abbreviation)							
1.02	Manufacturer's model designation							
1.03	Power source: (battery, diesel, LP gas, petrol)							
1.04	Operator type: pedestrian, (operator)-standing, -seated							
1.05	Load capacity	Q (kg)	1200	1200	1200	1600	1600	1600
1.06	Load centre distance	c (mm)	600	600	600	600	600	600
1.08	Load wheel axle to fork face (forks lowered)	x (mm)	647	946 ¹⁾	647	647	946 ¹⁾	647
1.09	Wheelbase	y (mm)	1254	1553	1319	1254	1553	1319
Weight								
2.01	Truck weight with nominal load & maximum battery weight	kg	2530 ²⁾	2550 ²⁾	2530 ²⁾	2960 ²⁾	2980 ²⁾	2960 ²⁾
2.02	Axle loadings with nominal load & maximum battery weight, drive/load side	kg	900/1630 ²⁾	1220/1330 ²⁾	900/1630 ²⁾	930/2030 ²⁾	1330/1650 ²⁾	930/2030 ²⁾
2.03	Axle loadings without load & with maximum battery weight, drive/load side	kg	910/420 ²⁾	1010/340 ²⁾	910/420 ²⁾	940/420 ²⁾	1040/340 ²⁾	940/420 ²⁾
Wheels, Drive Train								
3.01	Tyres: PT=Power Thane, Vul=Vulkollan, drive/load side		Vul/Vul	Vul/Vul	Vul/Vul	Vul/Vul	Vul/Vul	Vul/Vul
3.02	Tyre dimensions, drive side	(mm)	230x70	230x70	230x70	230x70	230x70	230x70
3.03	Tyre dimensions, load side	(mm)	85x75	85x75	85x75	85x75	85x75	85x75
3.04	Castor wheel dimensions (diameter x width)	(mm)	150x50	150x50	150x50	150x50	150x50	150x50
3.05	Number of wheels, drive/load side (x=driven)		2+1x/4	2+1x/4	2+1x/4	2+1x/4	2+1x/4	2+1x/4
3.06	Track width (centre of tyres), drive side	b10 (mm)	520	520	520	520	520	520
3.07	Track width (centre of tyres), load side	b11 (mm)	410	410	410	410	410	410
Dimensions								
4.09	Height of tiller arm (min./max.)	h14 (mm)	1141/1341	1141/1341	1141/1341	1141/1341	1141/1341	1141/1341
4.15	Fork height, fully lowered	h13 (mm)	92	92	75	92	92	75
4.19	Overall length	l1 (mm)	2037/2492 ³⁾	2112/2568 ³⁾	2086/2542 ³⁾	2037/2492 ³⁾	2112/2568 ³⁾	2086/2542 ³⁾
4.20	Length to fork face (includes fork thickness)	l2 (mm)	887/1343 ³⁾	887/1343 ³⁾	887/1343 ³⁾	887/1343 ³⁾	887/1343 ³⁾	887/1343 ³⁾
4.21	Overall width	b1/b2 (mm)	790/926	790/926	1124/1324/1524	790/926	790/926	1124/1324/1524
4.22	Fork dimensions (thickness, width, length)	s / e / l (mm)	56/185/1150	56/185/1150	40/100/1150	56/185/1150	56/185/1150	40/100/1150
4.25	Outside width over forks (minimum/maximum)	b5 (mm)	570	570	200-980	570	570	200-980
4.32	Ground clearance at centre of wheelbase, (forks lowered)	m2 (mm)	29	25	29	29	25	29
4.33a	Working aisle width (Ast) with 1000 x1200 mm pallets, load crosswise, platform up/down	Ast (mm)	2519/2955 ³⁾	2669/3105 ³⁾	2586/3022 ³⁾	2519/2955 ³⁾	2669/3105 ³⁾	2586/3022 ³⁾
4.33b	Working aisle width (Ast3) with 1000 x1200 mm pallets, load crosswise, platform up/down	Ast3 (mm)	2239/2675 ³⁾	2239/2675 ³⁾	2306/2742 ³⁾	2239/2675 ³⁾	2239/2675 ³⁾	2306/2742 ³⁾
4.34a	Working aisle width (Ast) with 800 x1200 mm pallets, load lengthwise, platform up/down	Ast (mm)	2419/2855 ³⁾	2509/2945 ³⁾	2486/2922 ³⁾	2419/2855 ³⁾	2509/2945 ³⁾	2486/2922 ³⁾
4.34b	Working aisle width (Ast3) with 800 x1200 mm pallets, load lengthwise, platform up/down	Ast3 (mm)	2289/2725 ³⁾	2289/2725 ³⁾	2356/2792 ³⁾	2289/2725 ³⁾	2289/2725 ³⁾	2356/2792 ³⁾
4.35	Turning circle radius	Wa (mm)	1536/1972 ³⁾	1835/2271 ³⁾	1603/2039 ³⁾	1536/1972 ³⁾	1835/2271 ³⁾	1603/2039 ³⁾
Performance								
5.01	Travel speed, with/without load	km/h	6/6	6/6	6/6	9/9	9/9	9/9
5.02	Lifting speed, with/without load	m/s	0.11/0.17	0.11/0.17	0.11/0.17	0.13/0.23	0.13/0.23	0.13/0.23
5.03	Lowering speed, with/without load	m/s	0.23/0.12	0.23/0.12	0.23/0.12	0.23/0.22	0.23/0.22	0.23/0.22
5.07	Gradeability, with/without load	%	7/15	7/15	7/15	10/15	10/15	10/15
5.10	Service brakes (mechanical/hydraulic/electric/pneumatic)		Electric	Electric	Electric	Electric	Electric	Electric
Electric motors								
6.01	Drive motor capacity (60 min. short duty)	kW	0.8	0.8	0.8	2	2	2
6.02	Lift motor output at 15% duty factor	kW	2.2	2.2	2.2	3	3	3
6.04	Battery voltage/capacity at 5-hour discharge	V/Ah	24/270, 375	24/270, 375	24/270, 375	24/375	24/375	24/375
6.05	Battery weight	kg	245,285	245,285	245,285	285	285	285
Miscellaneous								
8.01	Type of drive control		Stepless	Stepless	Stepless	Stepless	Stepless	Stepless
8.04	Noise level, mean value at operator's ear (EN 12053)	dB(A)	68	68	68	68	68	68

1) = -17mm triplex masts
2) = DF3300
3) = +17mm triplex masts

Ast = Wa + R + a
Ast = Wa + √(l6 - x)² + (b12 / 2)² + a
Ast = Working aisle width
Wa = Turning radius
a = Safety clearance 2 x 100 mm
R = √(l6 - x)² + (b12 / 2)²
l6 = Pallet length (800 or 1000 mm)
b12 = Pallet width (1200 mm)



Lower Cost of Ownership

- Smooth, progressive, with easy to use controls enhancing operator concentration leading to better shift productivity.
- AC-drive technology means longer service intervals, reducing the total cost of ownership.
- Battery discharge indicator (BDI) incorporates lift cut-out for battery protection.
- Durable chassis and mast construction.

Unmatched Productivity

- Ideal for work in narrow aisles, these stackers are precision engineered for fast travel and fast lifting speeds that guarantee high productivity lifting loads up to 5400mm (with Triplex mast).
- Initial lift models for increased ground clearance, making the truck suitable for working on ramps.
- The powerful AC based traction motor is sealed against dust and water splashes and features optimum torque for excellent acceleration, traction, speed and regenerative braking.
- Strong regenerative braking speeds up work cycles, reduces heat build-up in the motor and protects components from premature wear, giving better energy efficiency.
- Fast acceleration, drive speed of 9 km/h (1.6 tonnes model) and 6 km/h (1.2 tonnes models) and excellent manoeuvrability giving high productivity.
- LCD display with all relevant information (Drive wheel direction, driving speed, battery discharge, errors and warnings, service access).
- Tapered fork tips for easy pallet entry, when approaching at an angle.
- High residual capacity makes the truck suitable for most loads.
- Good service access allows for reduced down time.
- Many options available to adapt the truck to its application.
- Wider castor wheels for improved stability on greater lift heights.
- Proportional controlled hydraulics allow sensitive load handling.
- Programmable features for driver.

Safety and Ergonomics

- The poweRamic mast affords excellent overall visibility for safe operation and precise load handling.
- Ergonomic and durable tiller arm with all functions within easy reach.
- Suspended drivers platform for driver comfort.
- Wide platform for stable standing position.
- Side bars for additional safety on NSV16N models.
- Minimal ground clearance for improved safety.

Options

- Various fork lengths and widths.
- Side plates can be customised.
- Side bars for additional safety on NSV12N models.
- Various mast types (duplex, triplex with or without freelif).
- PIN code startup with programmable features.
- Choice of different wheel materials.
- Lift height indicator.
- Load weight indicator.
- Internal charger.

Cat® Lift Trucks.

Your partner in materials handling.

NSV12/16N				
Mast Type	h3+h13	h1*	h4*	(h2+h13)
	mm	mm	mm	mm
S	1500	1890	1890	-
D	1600	1371	2101	(155)
	2000	1571	2501	(155)
	2500	1790	2970	(155)
	2900	1990	3370	(155)
	3300	2190	3770	(155)
	3700	2390	4170	(155)
	4400	2756	4870	(155)
DF	2500	1790	2970	1310
	2900	1990	3370	1510
	3300	2190	3770	1710
	3700	2390	4170	1910
	4400	2756	4870	2276
T	4200	1990	4650	(145)
	4800 ¹⁾	2190 ¹⁾	5250 ¹⁾	(145) ¹⁾
	5400 ¹⁾	2390 ¹⁾	5850 ¹⁾	(145) ¹⁾
TF	4200	1990	4650	1540
	4800 ¹⁾	2190 ¹⁾	5250 ¹⁾	1740 ¹⁾
	5400 ¹⁾	2390 ¹⁾	5850 ¹⁾	1940 ¹⁾

¹⁾ only NSV16N(I)(S)

NSV12/16NI & NSV12-16NS				
Mast Type	h3+h13	h1	h4	(h2+h13)
	mm	mm	mm	mm
S	1500	-	-	-
D	1600	1433	2132	(155)
	2000	1602	2532	(155)
	2500	1821	3001	(155)
	2900	2021	3401	(155)
	3300	2221	3801	(155)
	3700	2421	4201	(155)
	4400	2771	4901	(155)
DF	2500	1821	3001	1310
	2900	2021	3401	1510
	3300	2221	3801	1710
	3700	2421	4201	1910
	4400	2771	4901	2260
T	4200	2021	4581	(145)
	4800 ¹⁾	2221 ¹⁾	5281 ¹⁾	(145) ¹⁾
	5400 ¹⁾	2421 ¹⁾	5881 ¹⁾	(145) ¹⁾
TF	4200	2021	4681	1540
	4800 ¹⁾	2221 ¹⁾	5281 ¹⁾	1740 ¹⁾
	5400 ¹⁾	2421 ¹⁾	5881 ¹⁾	1940 ¹⁾

Mast Performance and Capacity

- S Simplex
- DS Duplex with Clear View Mast
- DEV Duplex with Full Free Lift
- TR Triplex with Clear View Mast
- TREV Triplex with Full Free Lift
- TF Triplex with Integral Mast
- h3+h13 Lift height
- h1 Lowered mast height (with initial lift + 115 mm)
- h4 Raised mast height (with initial lift + 115 mm)
- h2+h13 Free lift height
- * Initial lift NSV12NI / NSV16NI and straddle models
NSV12NS/ NSV16NS, add 31 mm

270Ah battery up to lifting height of 3300mm

catliftruck@mcf.nl
www.catliftruck.com

WESC0868(04/08)ok
Copyright ©2008, MCFE. All rights reserved.
CATERPILLAR, CAT, their respective logos,
'Caterpillar yellow' and the 'Power Edge' trade dress,
as well as corporate and product identity used herein,
are trademarks of Caterpillar and may not be used
without permission.
Printed in The Netherlands

NOTE: Performance specifications may vary depending on standard manufacturing tolerances, vehicle condition, types of tyres, floor or surface conditions, applications, or operating environment. Trucks may be shown with non-standard options. Specific performance requirements and locally available configurations should be discussed with your Cat lift trucks Dealer. Cat Lift Trucks follows a policy of continual product improvement. For this reason, some materials, options and specifications could change without notice.

